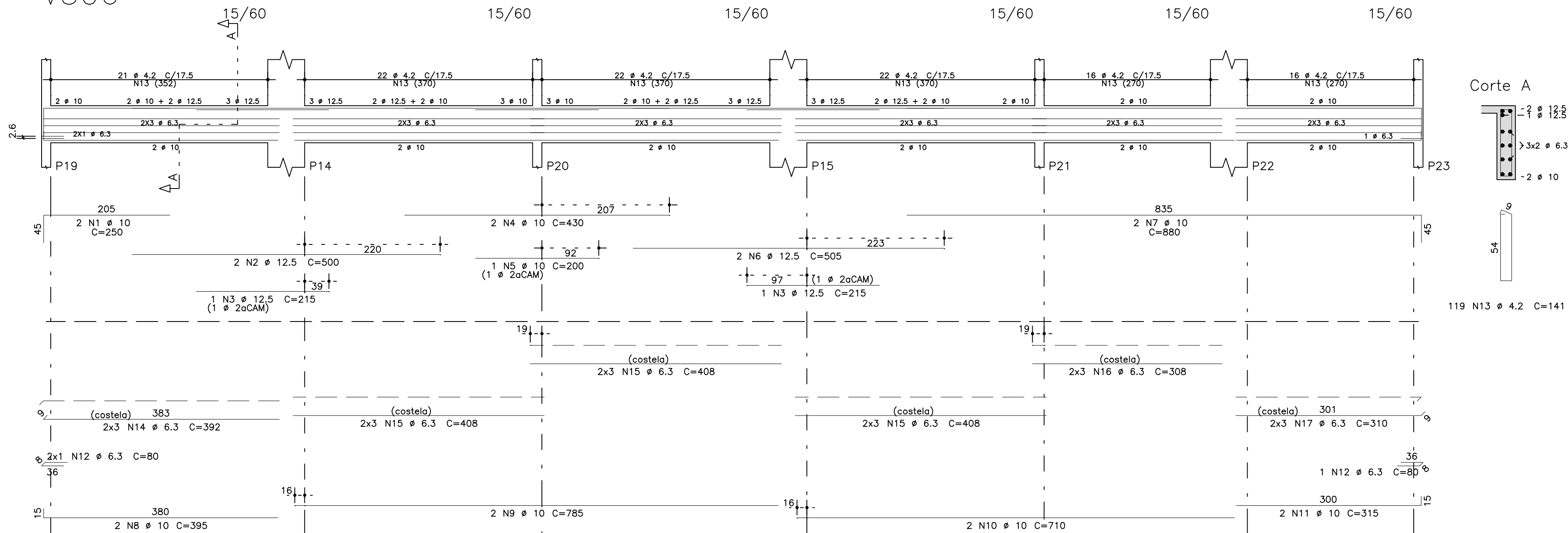
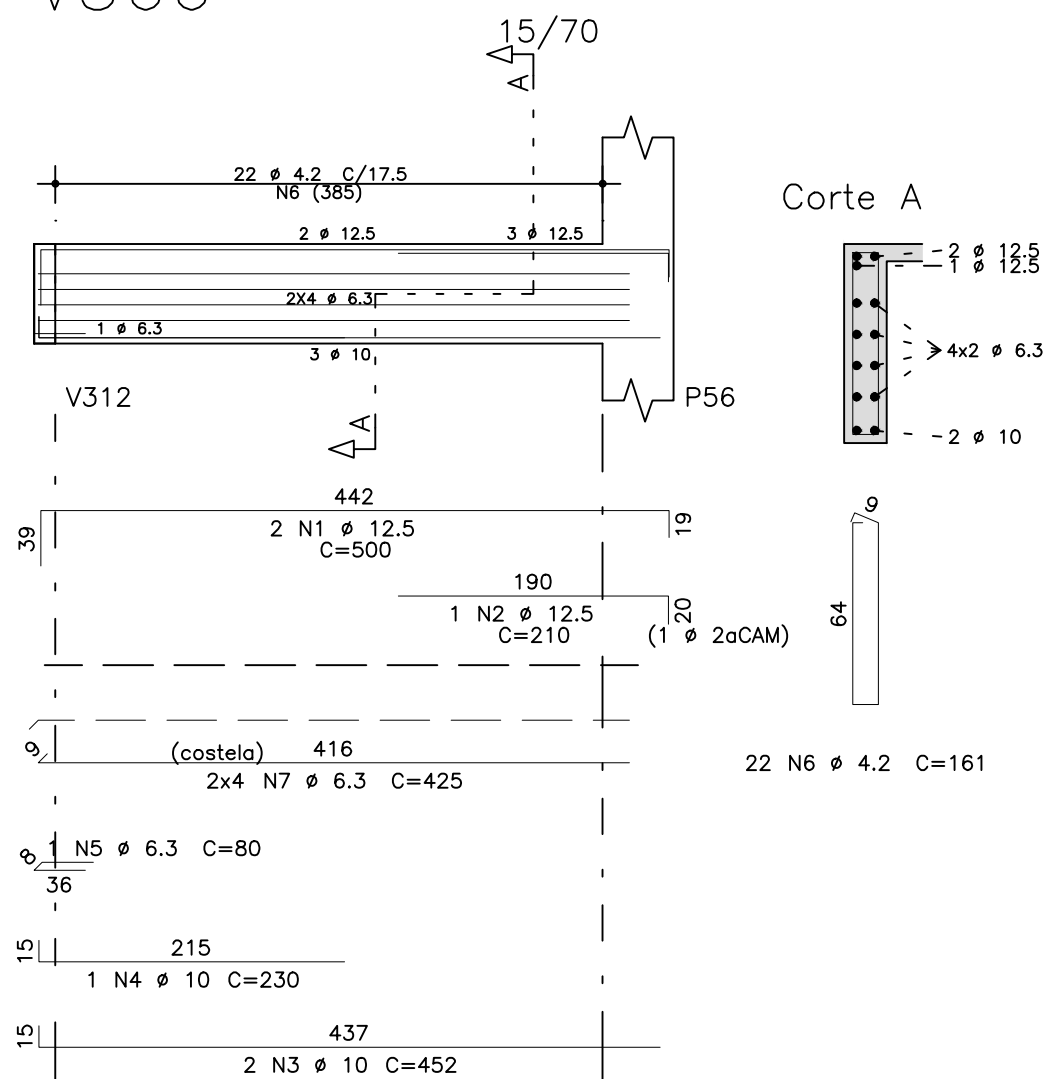


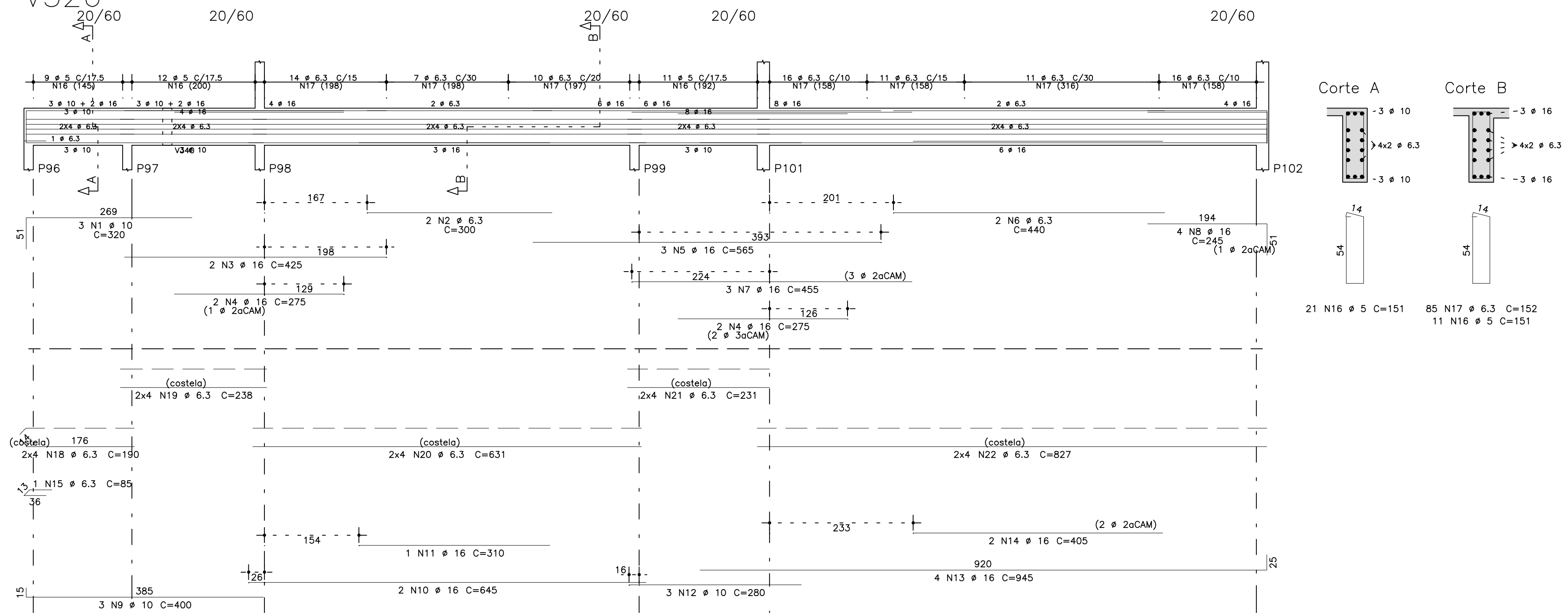
V306



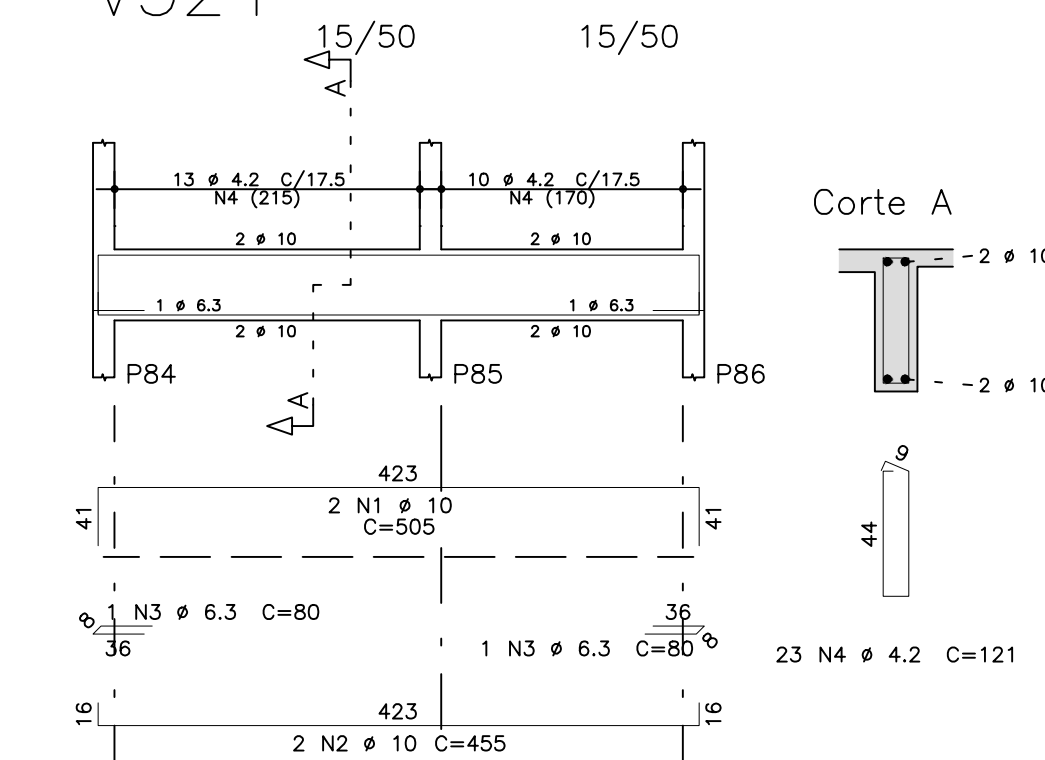
V366



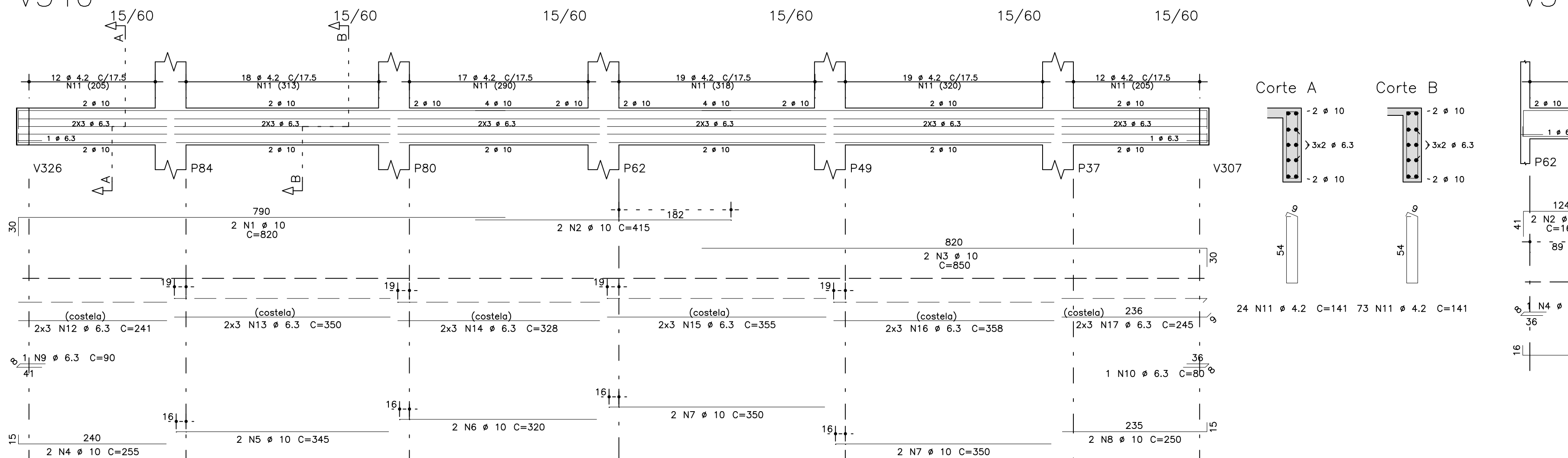
V326



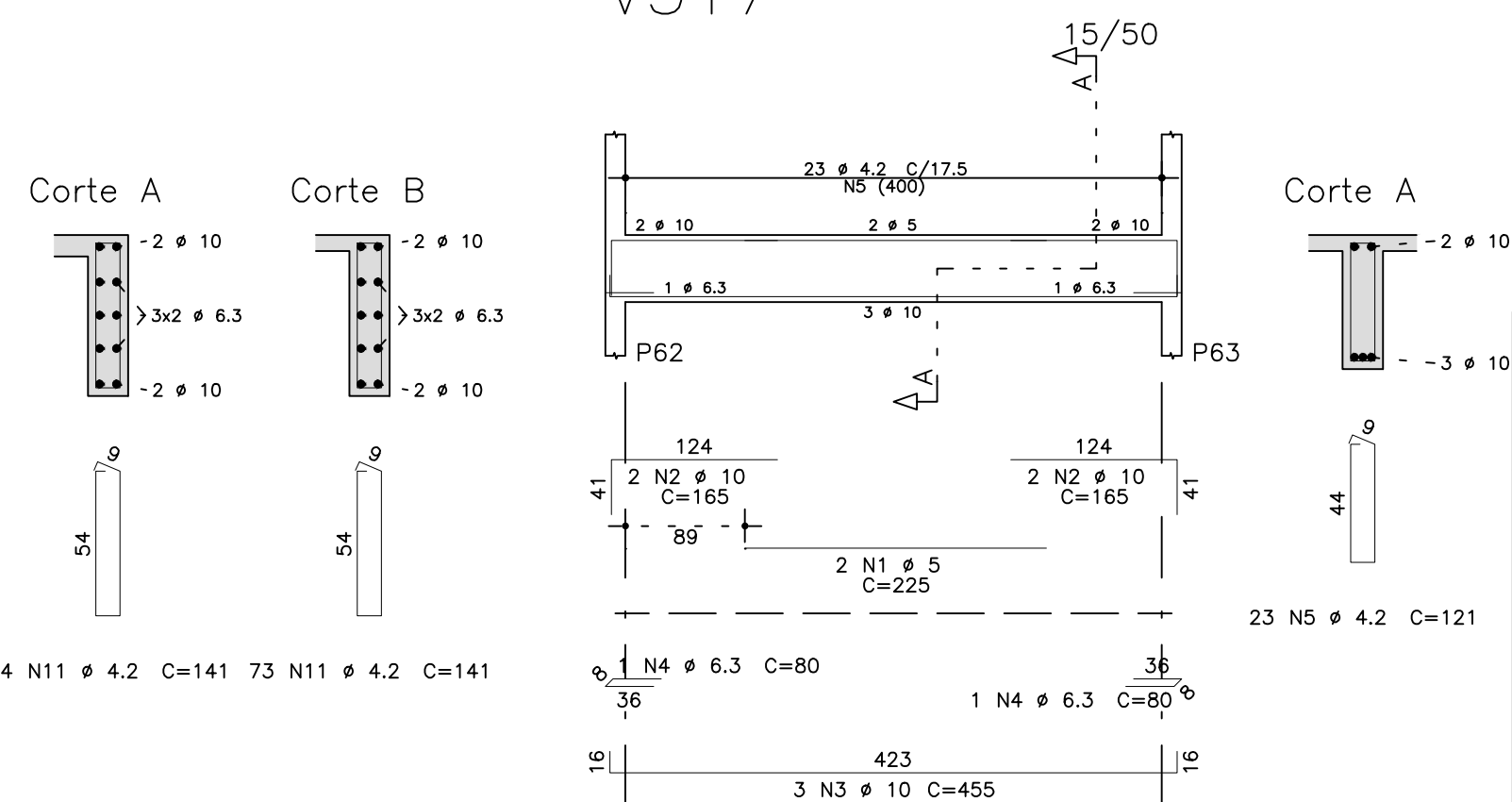
V324



V340



V317



	AÇO	POS	BIT (mm)	QUANT	COMPRIMENTO	
					UNIT (cm)	TOTAL (cm)
V306						
	50A	1	10	2	250	500
	50A	2	12.5	2	500	1000
	50A	3	12.5	2	215	430
	50A	4	10	2	430	860
	50A	5	10	1	200	200
	50A	6	12.5	2	505	1010
	50A	7	10	2	880	1760
	50A	8	10	2	395	790
	50A	9	10	2	785	1570
	50A	10	10	2	710	1420
	50A	11	10	2	315	630
	50A	12	6.3	3	80	240
	60B	13	4.2	119	141	16779
	50A	14	6.3	6	392	2352
	50A	15	6.3	18	408	7344
	50A	16	6.3	6	308	1848
	50A	17	6.3	6	310	1860

V317					
60B	1	5	2	225	450
50A	2	10	4	165	660
50A	3	10	3	455	1365
50A	4	6.3	2	80	160
60B	5	4.2	23	121	2783

V324					
50A	1	10	2	505	1010
50A	2	10	2	555	1110
50A	3	6.3	2	80	160
60B	4	4.2	23	121	2783

V326					
50A	1	10	3	320	960
50A	2	6.3	2	300	600
50A	3	16	2	425	850
50A	4	16	4	275	1100
50A	5	16	3	565	1695
50A	6	6.3	2	440	880
50A	7	16	3	455	1365
50A	8	16	4	245	980
50A	9	10	3	400	1200
50A	10	16	2	645	1290
50A	11	16	1	310	310
50A	12	10	3	280	840
50A	13	16	4	945	3780
50A	14	16	2	405	810
50A	15	6.3	1	85	85
60B	16	5	32	151	4832
50A	17	6.3	85	152	12920
50A	18	6.3	8	190	1520
50A	19	6.3	8	238	1904
50A	20	6.3	8	631	5048
50A	21	6.3	8	231	1848
50A	22	6.3	8	827	6616

V340					
50A	1	10	2	820	1640
50A	2	10	2	415	830
50A	3	10	2	850	1700
50A	4	10	2	255	510
50A	5	10	2	345	690
50A	6	10	2	320	640
50A	7	10	4	350	1400
50A	8	10	2	250	500
50A	9	6.3	1	90	90
50A	10	6.3	1	80	80
60B	11	4.2	97	141	13677
50A	12	6.3	6	241	1446
50A	13	6.3	6	350	2100
50A	14	6.3	6	328	1968
50A	15	6.3	6	355	2130
50A	16	6.3	6	358	2148
50A	17	6.3	6	245	1470

V366					
50A	1	12.5	2	500	1000
50A	2	12.5	1	210	210
50A	3	10	2	452	904
50A	4	10	1	230	230
50A	5	6.3	1	80	80
60B	6	4.2	22	161	3542
50A	7	6.3	8	425	3400

RESUMO AÇO CA 50-60			
AÇO	BIT (mm)	COMPR (m)	PESO (kg)
60B	4.2	396	43
60B	5	53	8
50A	6.3	603	148
50A	10	237	146
50A	12.5	37	35
50A	16	122	192
Peso Total 60B =			51 kg
Peso Total 50A =			521 kg

fck 250. kg/cm2

Schuring & Schuring Ltda. Escritório Técnico B.E.SCHURING - Projetos de Engenharia Av. XV de Novembro, 489 - Porto 2o. Andar - Cuiabá MT Fone: (065) 321.8999 - Fax: (065) 623.5066 - E-mail: - schuring@terra.com.br	
PROJETO: PROPRIETÁRIO: PREFEITURA MUNICIPAL VARZEA GRANDE MT RESP. TEC. EXECUCÃO: RESP. TEC. EXECUCÃO: EMEB ALINO FERREIRA MAGALHAES	ASSUNTO: DET VIGA PRI PAV
AUTORES DO PROJETO: BENEDITO ELISEU SCHURING Eng. Civil - CREA 715/D-MT	FECHA DETALHADA: V306 / V317 / V324 / V326 / V340 / V366
ANDRE LUIZ SCHURING Eng. Civil - CREA 8697/D-MT	FECHA: 250 VERIFICAÇÃO: 250 OUTROS AUTORES: 250 DATA: 250 FOLHA NO. 38